



The Dimock Gallery, Art Department
The George Washington University



Thesis Candidate Show

Winter 1989

January 12–February 2, 1989

Candidates

Welton B. Doby III
Photography

Teresa Ann Duke
Painting

Chris Tucker Haggerty
Design

Muriel H. Hasbun
Photography

Dietlind Matin
Visual Communications

Thesis Titles

3

Welton B. Doby III
Commercial Photography as Fine Art

4

Teresa Ann Duke
*Constructing Dynamic, Three-Dimensional Space
through Manipulation of Light and Color*

5

Chris Tucker Haggerty
Feminine Foothold: Five Generations of Women

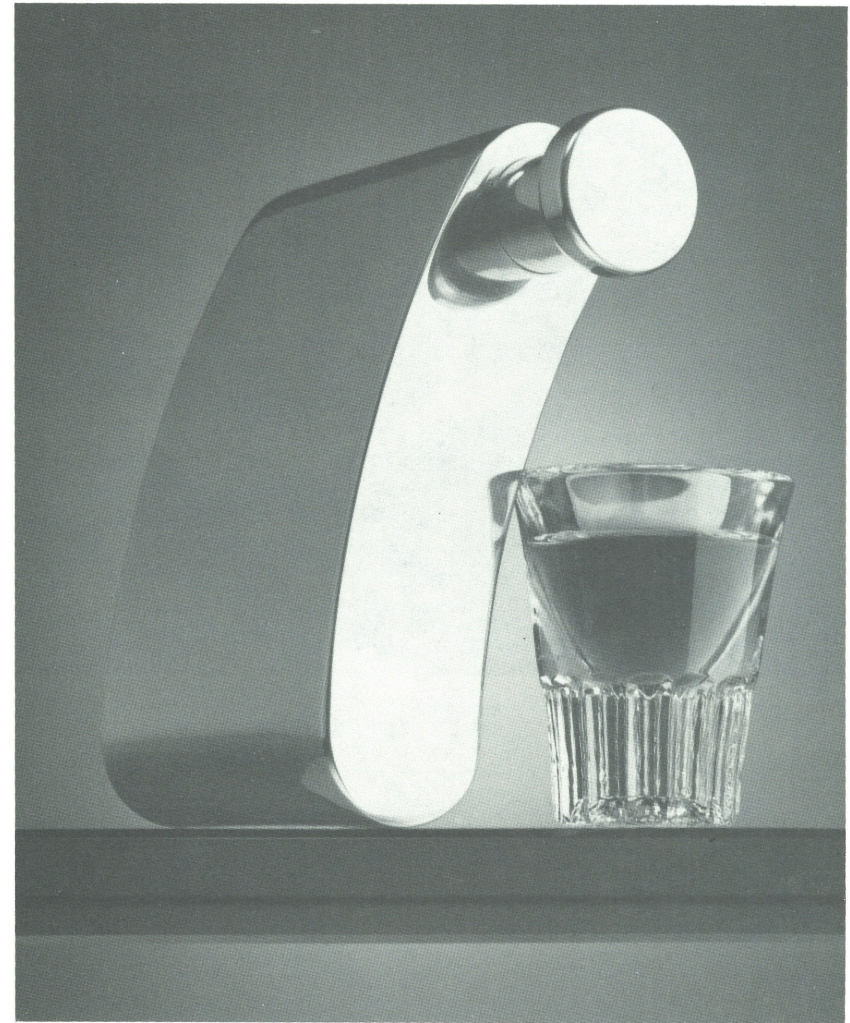
6

Muriel H. Hasbun
A Hint Half Guessed: A Portfolio of Photographs

7

Dietlind Matin
*A Corporate Identity Program
for Small Retail Businesses*

2



Welton B. Doby III
Untitled
Photograph
15½" × 12"

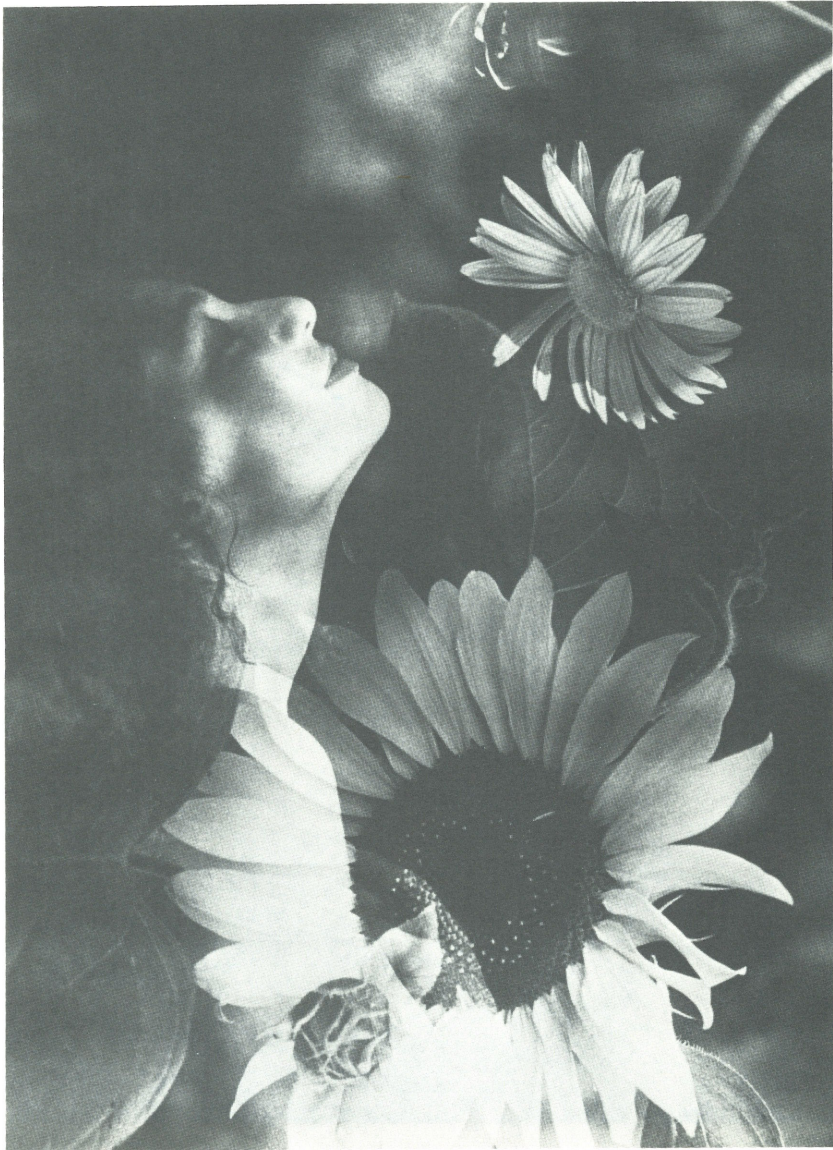
3



Teresa Ann Duke
Market in Wan Chai, 1988
Oil on canvas
38" x 46"

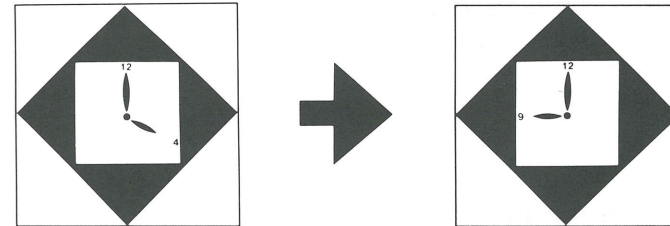
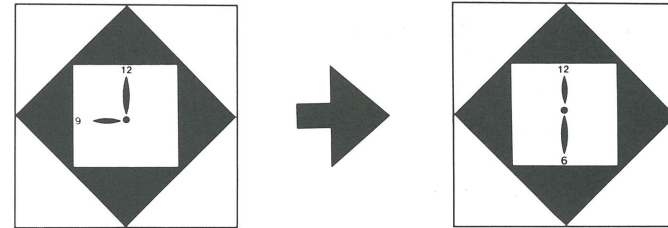


Chris Tucker Haggerty
Chris Tucker Haggerty (self portrait), 1988
Casein, metallic and black ink
26³/₄" x 18¹/₄"



Muriel H. Hasbun
"Ravissement" (Rapture), 1988
 Toned gelatin silver print
 16¼" × 10½"

صباحاً
 MORNING



بعد الظهر
 AFTERNOON

Dietlind Matin
Business Hours, 1988
 Photo-stat (inking)
 15½" × 15"

Checklist of the Exhibition

Welton B. Doby III

1. *Tracy, Di and Wood*
Photograph
13 $\frac{3}{4}$ " x 16 $\frac{1}{2}$ "
2. *Untitled*
Photograph
11 $\frac{1}{2}$ " x 17 $\frac{3}{8}$ "
3. *Untitled*
Photograph
15 $\frac{1}{2}$ " x 12"
4. *Untitled (Jewelry)*
Photograph
12 $\frac{3}{4}$ " x 16"

Teresa Ann Duke

5. *Boat Village in the New Territories, 1988*
Oil on linen
32" x 52"
6. *Dried Delicacies (and other Exotic Foods), 1988*
Oil on canvas
30" x 36"
7. *Market in Wan Chai, 1988*
Oil on canvas
38" x 46"
8. *View of South China Sea from the Peak, 1988*
Oil on canvas
32" x 46"

Chris Tucker Haggerty

9. *Julianna Jankovic Fontanell, 1988*
Casein, metallic and black ink
26 $\frac{7}{8}$ " x 19 $\frac{9}{16}$ "
10. *Cara Brianna Haggerty
and Caitlin Tucker Haggerty, 1988*
Casein, metallic and black ink
26 $\frac{1}{4}$ " x 18"
11. *Chris Tucker Haggerty, 1988*
Casein, metallic and black ink
26 $\frac{3}{4}$ " x 18 $\frac{1}{4}$ "
12. *Magdalena Bakan Jankovic
and Catherine Lavery Mahoney, 1988*
Casein, metallic and black ink
25 $\frac{5}{8}$ " x 18 $\frac{1}{4}$ "
13. *Bridget Mahoney Tucker, 1988*
Casein, metallic and black ink
27 $\frac{5}{16}$ " x 18 $\frac{9}{16}$ "
14. *Juliette Fontanell Tucker, 1988*
Casein, metallic and black ink
25 $\frac{7}{8}$ " x 17 $\frac{7}{8}$ "

Muriel H. Hasbun

15. *Andromeda*, 1988
Toned gelatin silver print
12¼" × 16½"
16. "*Chevelure*" (*Mane*), 1988
Toned gelatin silver print
15½" × 10½"
17. "*Chevelure II*" (*Mane II*), 1988
Toned gelatin silver print
16¾" × 12¾"
18. "*Macabrade*," 1988
Toned gelatin silver print
12½" × 15½"
19. *Ophelia*, 1988
Toned gelatin silver print
12¾" × 16¾"
20. "*Pour ne pas mourir d'aimer*"
(*Not to Die from Loving*), 1988
Toned gelatin silver print
15" × 11½"
21. "*Ravissement*" (*Rapture*), 1988
Toned gelatin silver print
16¼" × 10½"
22. "*Siamesa*" (*Siamese*), 1988
Toned gelatin silver print
8½" × 17"
23. "*Suaire*" (*Shroud*), 1988
Toned gelatin silver print
10¾" × 16¼"
24. "*Suaire sculpté*" (*Sculpted Shroud*), 1988
Toned gelatin silver print
11¾" × 15¼"
25. "*Torso al olvido*" (*Torso in Oblivion*), 1988
Toned gelatin silver print
10½" × 16¼"

Dietlind Matin

26. *Arabic Stationery*, 1988
Chromatec
11" × 18½"
27. *Business Hours*, 1988
Photo-stat (inking)
15½" × 15"
28. *Cash Memo*, 1988
Chromatec
9" × 7"
29. *English Stationery*, 1988
Chromatec
11" × 18½"
30. *Gift Certificate*, 1988
Chromatec/photo-stat
5¼" × 7"
31. *Gift Wrapping Paper*, 1988
(Displayed as gift wrapped box)
Chromatec
32. *In-house Coffee Set*
(coffee pot, cup, saucer,
creamer, and sugar bowl), 1988
Fired by Hutschenreuther, West Germany
33. *Mailing Label*, 1988
Chromatec
2¾" × 4½"
34. *Shopping Bag*, 1988
Chromatec/photo-stat
14½" × 12½"

The Dimock Gallery
The George Washington University
Lower Lisner Auditorium
21st and H Streets, N.W.
Washington, D.C. 20052
(202) 994-1525

Gallery Hours:
T, W, Th, F: 10–5 P.M.; Sat: 12–5 P.M.;
Sun & Mon: Closed to the public